

A1 Birtley to Coal House

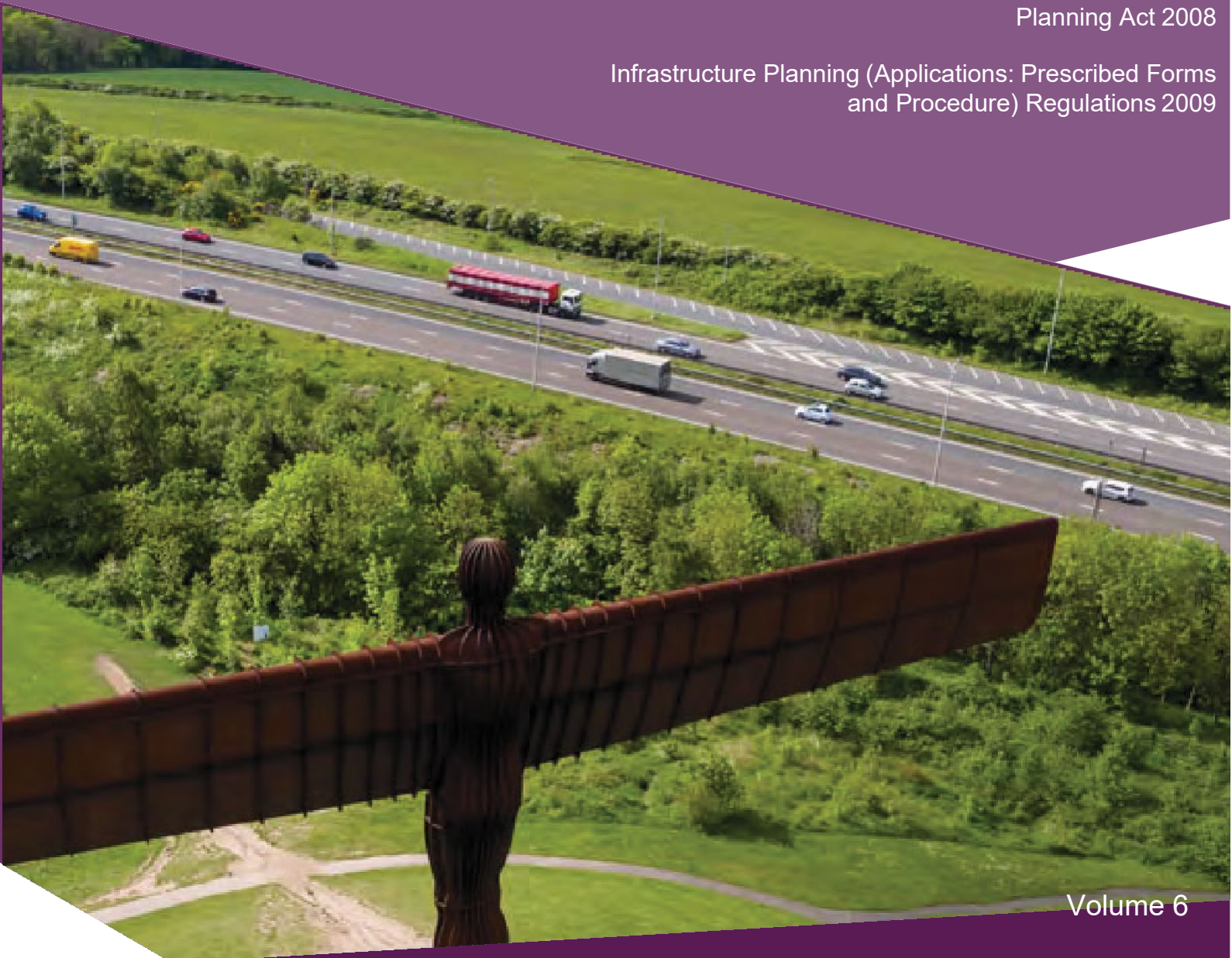
Scheme Number: TR010031

6.2 Environmental Statement – Figures 11.9 Do Something 2038 Noise Map

APFP Regulation 5(2)(a)

Planning Act 2008

Infrastructure Planning (Applications: Prescribed Forms
and Procedure) Regulations 2009



Infrastructure Planning

Planning Act 2008

**The Infrastructure Planning
(Applications: Prescribed Forms and
Procedures) Regulations 2009**

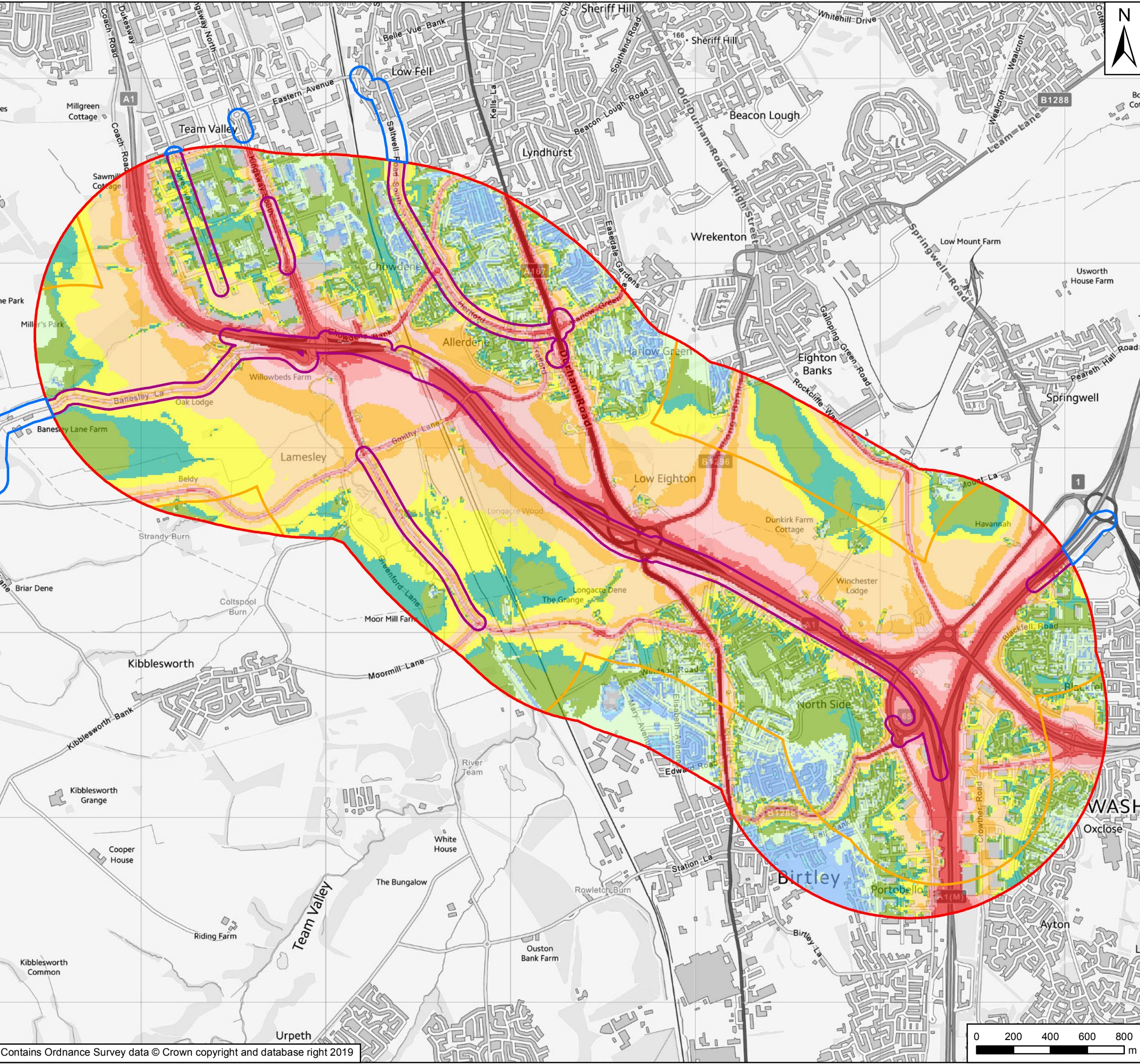
**A1 Birtley to Coal House
Development Consent Order 20[xx]**

**Environmental Statement -
Figures**

Regulation Reference:	APFP Regulation 5(2)(a)
Planning Inspectorate Scheme Reference	TR010031
Application Document Reference	TR010031/APP/6.2
Author:	A1 Birtley to Coal House Project Team, Highways England

Version	Date	Status of Version
Rev 0	14 August 2019	Application Issue

User Name: UKGDH001 Date Saved: 16/04/2019 14:43:02
 Document Path: \\uk.wsgroup.com\central\data\Projects\700419\A1\BCH PCF Stage 3 and 4\03 Shared\EI EIA and flood risk\01 Model\GIS\MXD\Environmental Statement\Figure 11.9 DS 2038 Noise Map.mxd



Key

- Wider Area 50m Buffers
- Airborne Vibration 40m Buffers
- 1km Boundary
- 600m Calculation Area

L_{A10,18hr} dB(A)

- 0 dB < x < 36 dB
- 36 dB < x < 39 dB
- 39 dB < x < 42 dB
- 42 dB < x < 45 dB
- 45 dB < x < 48 dB
- 48 dB < x < 51 dB
- 51 dB < x < 54 dB
- 54 dB < x < 55 dB
- 55 dB < x < 57 dB
- 57 dB < x < 60 dB
- 60 dB < x < 63 dB
- 63 dB < x < 66 dB
- 66 dB < x < 69 dB
- 69 dB < x < 100 dB

P01	Dec 2018	First Issue	BR	JP	NJA
Rev	Date	Description	By	Chk'd	App'd
Suitability			Status		

PINS Reference Number: TR010031

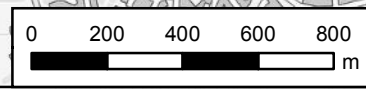
Client:

Project Title: A1 Birtley to Coal House Scheme

Drawing Title: Figure 11.9 - Do Something 2038 Noise Map, Daytime L_{A10,18hr} dB, Ground floor, Free-field

Scale: 1:20,000	Drawn: BR	Checked: JP	Approved: JP	Authorised: NJA
Original Size: A3	Date: Dec 2018	Date: Dec 2018	Date: Dec 2018	Date: Dec 2018
Drawing Number: HE551462	HE PIN: WSP	Originator: WSP	Volume: 6.2	Revision: P01

B2CH		PW Stage Code	
Section	Type	ID	Number



If you need help accessing this or any other Highways England information, please call **0300 470 4580** and we will help you.

© Crown copyright 2019.

You may re-use this information (not including logos) free of charge in any format or medium, under the terms of the Open Government Licence. To view this licence:

visit www.nationalarchives.gov.uk/doc/open-government-licence/

write to the **Information Policy Team, The National Archives,**

Kew, London TW9 4DU, or email

psi@nationalarchives.gsi.gov.uk.

This document is also available on our website at www.gov.uk/highways

If you have any enquiries about this document A1BirtleytoCoalhouse@highwaysengland.co.uk or call **0300 470 4580***.

*Calls to 03 numbers cost no more than a national rate call to an 01 or 02 number and must count towards any inclusive minutes in the same way as 01 and 02 calls.

These rules apply to calls from any type of line including mobile, BT, other fixed line or payphone. Calls may be recorded or monitored.

Registered office Bridge House, 1 Walnut Tree Close, Guildford GU1 4LZ
Highways England Company Limited registered in England and Wales number 09346363